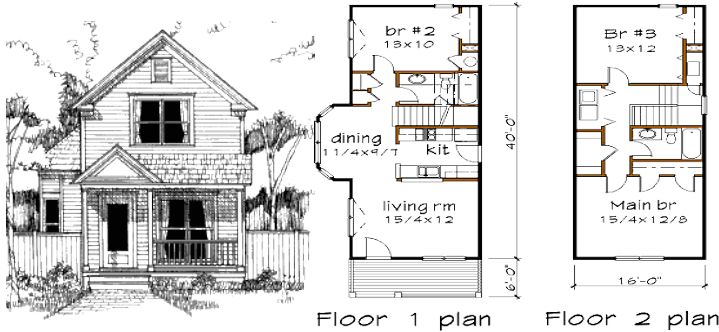




A development by SUMMECH Community Development Corporation
www.summechcdc.com



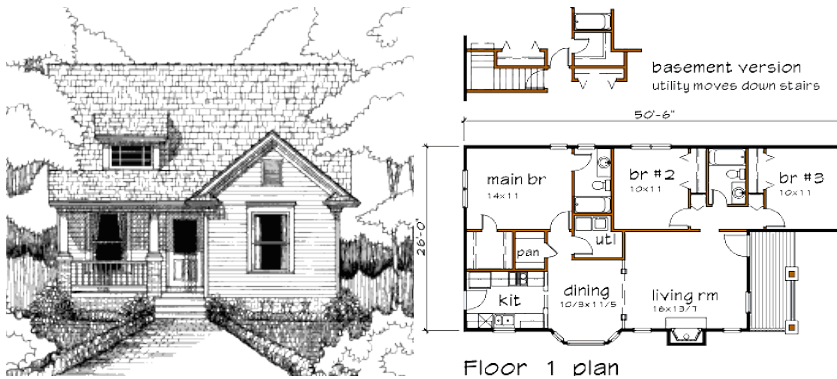
**3 Bedrooms 2 Full Baths
 Starting from \$220,000**

This two-story floorplan is approximately 1279 sq. ft. The plan has a bedroom on the main level with a spacious living room and a kitchen with a dining area. Upstairs this plan also has a spacious master bedroom and an additional bedroom. This plan is complete with a front porch and will have off-street parking.

This plan is schedule to be built on the following lots:

637 and 638 Cooper Street , 680 Smith Street

MLS #'s 01966980, 01967609, 01967680



**3 Bedrooms 2 Full Baths
 Starting from \$ 210,000!**

This one story ranch floorplan is very attractive with the master bedroom located in the rear. This plan is approximately 1152 sq. ft. The plan has a spacious living room and a kitchen with a dining area. This plan is complete with a front porch and will have off-street parking.

This plan is schedule to be built on the following lots:

685 and 689 Smith Street

MLS #'s 01967684 and 01967687

Call us today at 404.527.5465!

*The above information is believed to be accurate, but not warranted. Equal Housing Opportunity.
 The above are renderings of the floorplans to be developed by SUMMECH. When completed the actual home designs and specifications may vary.*

