



A development by SUMMECH Community Development Corporation

[www.summechcdc.com](http://www.summechcdc.com)



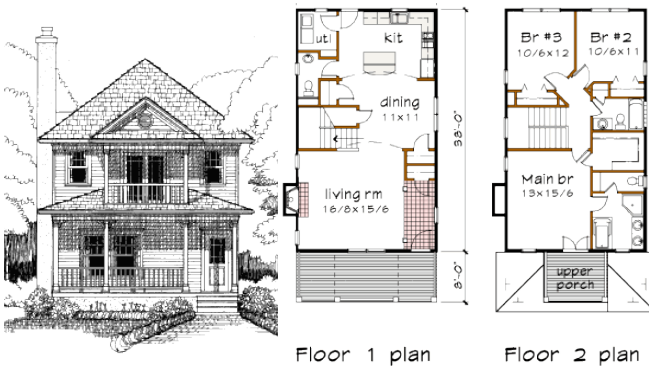
**3 Bedrooms 2 1/2 Baths**  
**Starting from \$240,000**

These two-story floorplans will range from 1,611 to 1,824 sq.ft.

*This plan is schedule to be built on the following lots:  
 661 and 669 Garibaldi Street*

**Standard Features Include**

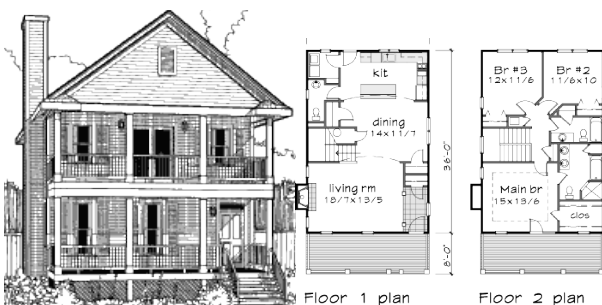
- 2-car detached garages
- Fireplace
- Hardwood floors on main
- Ceramic Tile in Baths
- Granite Countertops
- Rear deck
- Dual Central Units
- Dishwasher/Range/Oven



*This plan is schedule to be built on the following lots:  
 663 and 667 Garibaldi Street*



**For more information  
 Call  
 404.681.5692**



*This plan is schedule to be built on the following lots:  
 665 Garibaldi Street*

*The above are renderings of the floorplans to be developed by SUMMECH.  
 When completed the actual home designs and specifications may vary.*

*The above information is believed to be accurate, but not warranted.  
 Equal Housing Opportunity.*

**404.527.5465**